

the centre

## the centre

The Käte Hamburger Research Centre 'Dis:connectivity in Processes of Globalisation' (global dis:connect) is a BMBF-funded transdisciplinary institute for advanced studies based at the Ludwig-Maximilians-University Munich. It deals with historical and contemporary processes of globalisation.

As a dynamic intellectual community, global dis:connect consists of a core team of researchers, administrative and support staff as well as up to ten scholars and artists from all over the world who come to Munich each year.

The directors of the centre are Prof. Dr Christopher Balme, Prof. Dr Burcu Dogramaci and Prof. Dr Roland Wenzlhuemer.

LMU Munich is one of the leading universities in Europe with a history of over 500 years. It stands for high quality academic education and outstanding research. Global dis:connect is centrally located in Munich with excellent connections to local and international cultural and academic institutions.

contact us



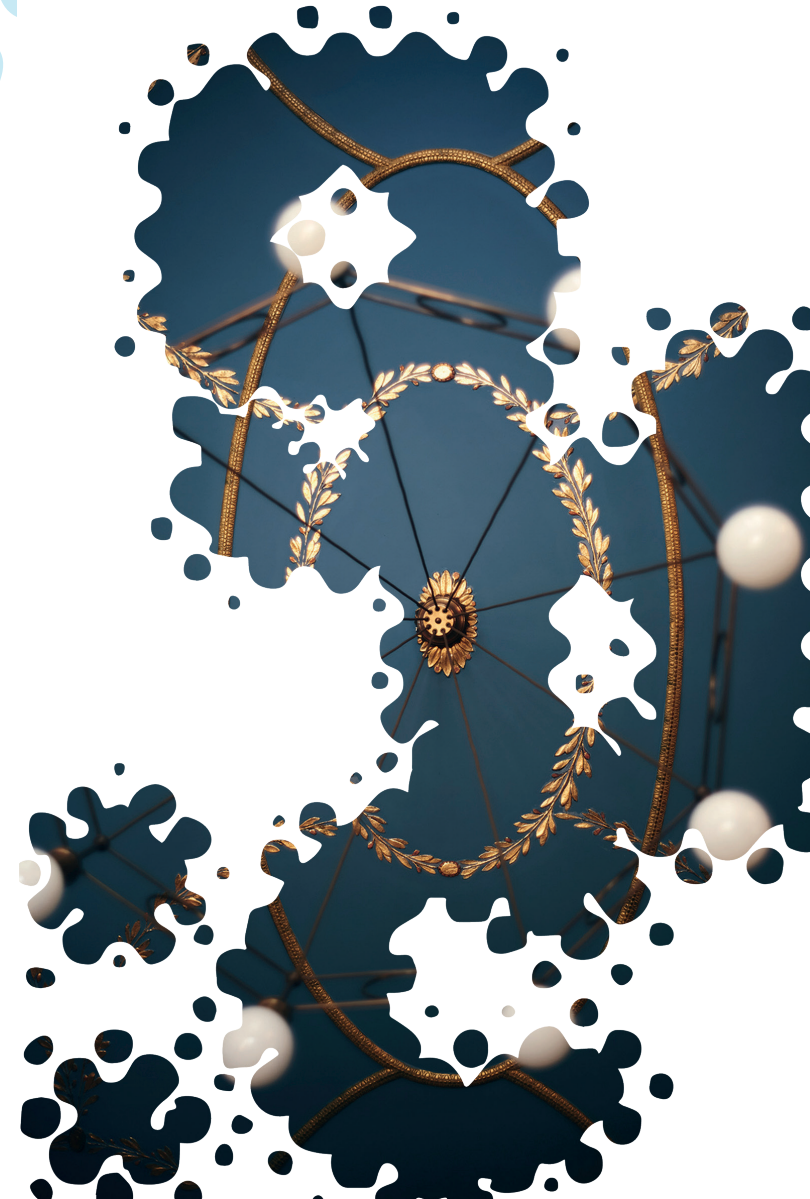
Käte Hamburger Research Centre  
global dis:connect  
Maria-Theresia-Str. 21  
81675 Munich  
<https://www.globaldisconnect.org>  
gdc@lmu.de



Come dis:connect  
with us.



**Käte Hamburger Research Centre**  
Dis:connectivity in Processes of Globalisation



## global dis:connect – basic concept and research foci

---

The centre explores from international and transdisciplinary perspectives the interdependent, complex relationship between global interconnectedness, lack of interconnectedness and disentanglement in historical and contemporary globalisation processes. The term dis:connection emphasises the dynamic interrelationship between global integration, disintegration and (absent) connections. The concept highlights the role of delays and detours, of interruptions and resistances, of the active absence of connections in global contexts and explores their significance.

### Research foci

- absences
- laboratories
- detours
- cultural infrastructure
- interruptions
- temporalities

## the fellowship programme

---

Up to ten fellows, including practicing artists and curators, are selected each year to pursue their work at global dis:connect. With backgrounds in arts, humanities and social science disciplines, they pursue a wide range of exciting projects related to global dis:connect's research foci.

Applications are open to post-doctoral as well as senior researchers who have already distinguished themselves with outstanding work within the thematic focus of the centre.

Käte Hamburger Research Centre; Copyright Lambert Strehlke



At global dis:connect fellows find ideal conditions for the further development and completion of their projects. During their six- to twelve-months stay, fellows are expected to reside in Munich and to participate in the events of the centre, such as the regular lunchtime colloquia and the interdisciplinary reading group. Fellows are encouraged to communicate their research results on one of the centre's publication platforms. During their stay fellows are given the opportunity either to organise an international workshop in tandem with one or more other fellows on a research topic or to organise events in cooperation with our partner institutions in the city of Munich.